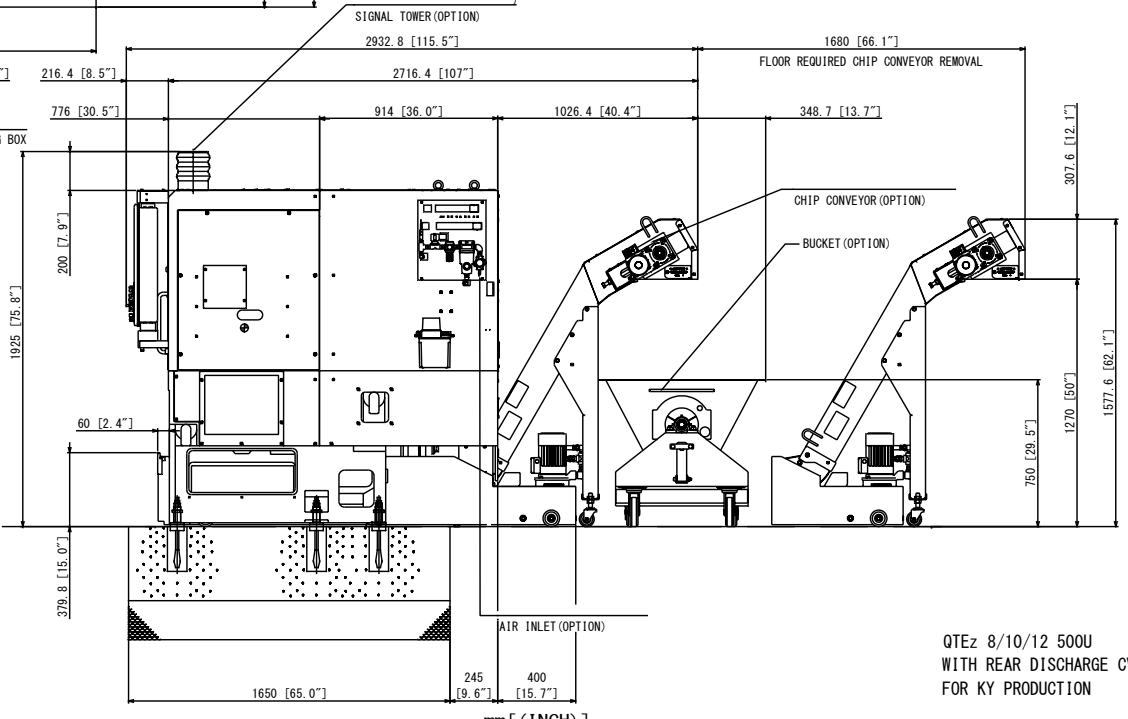
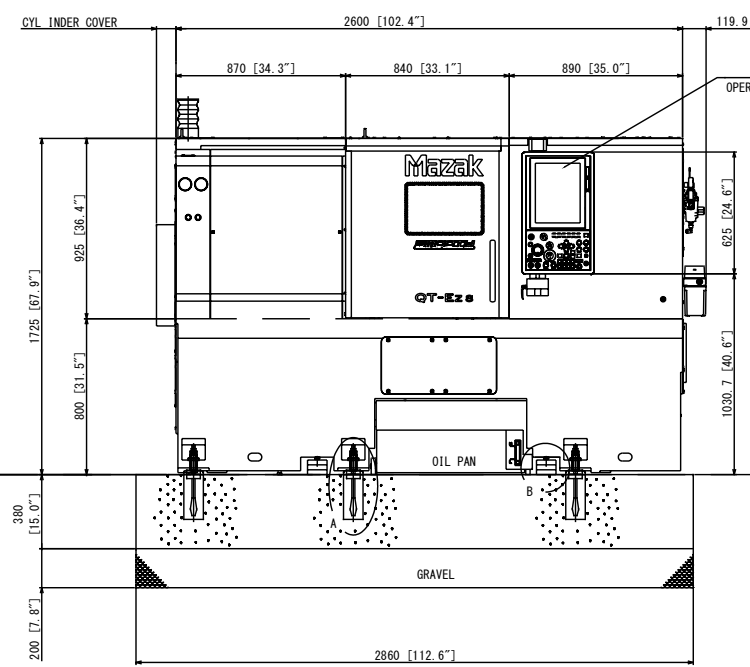
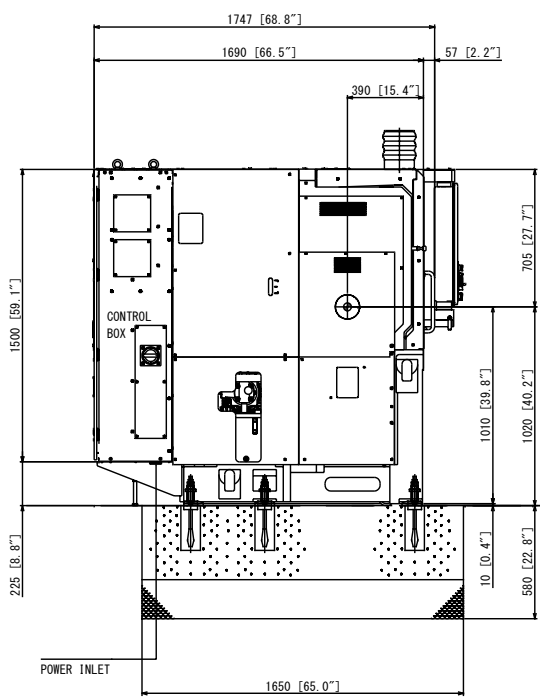
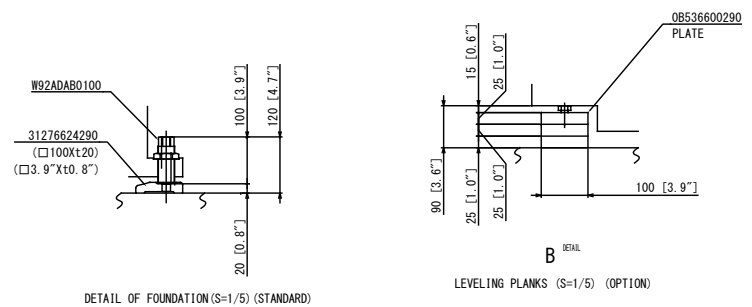
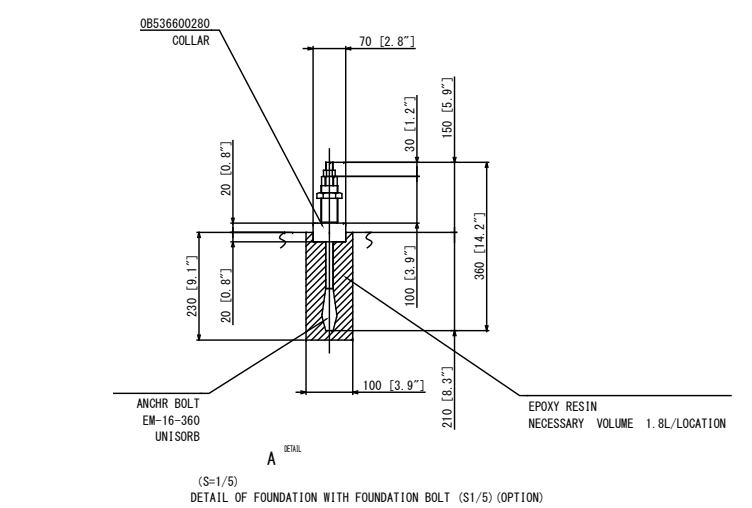
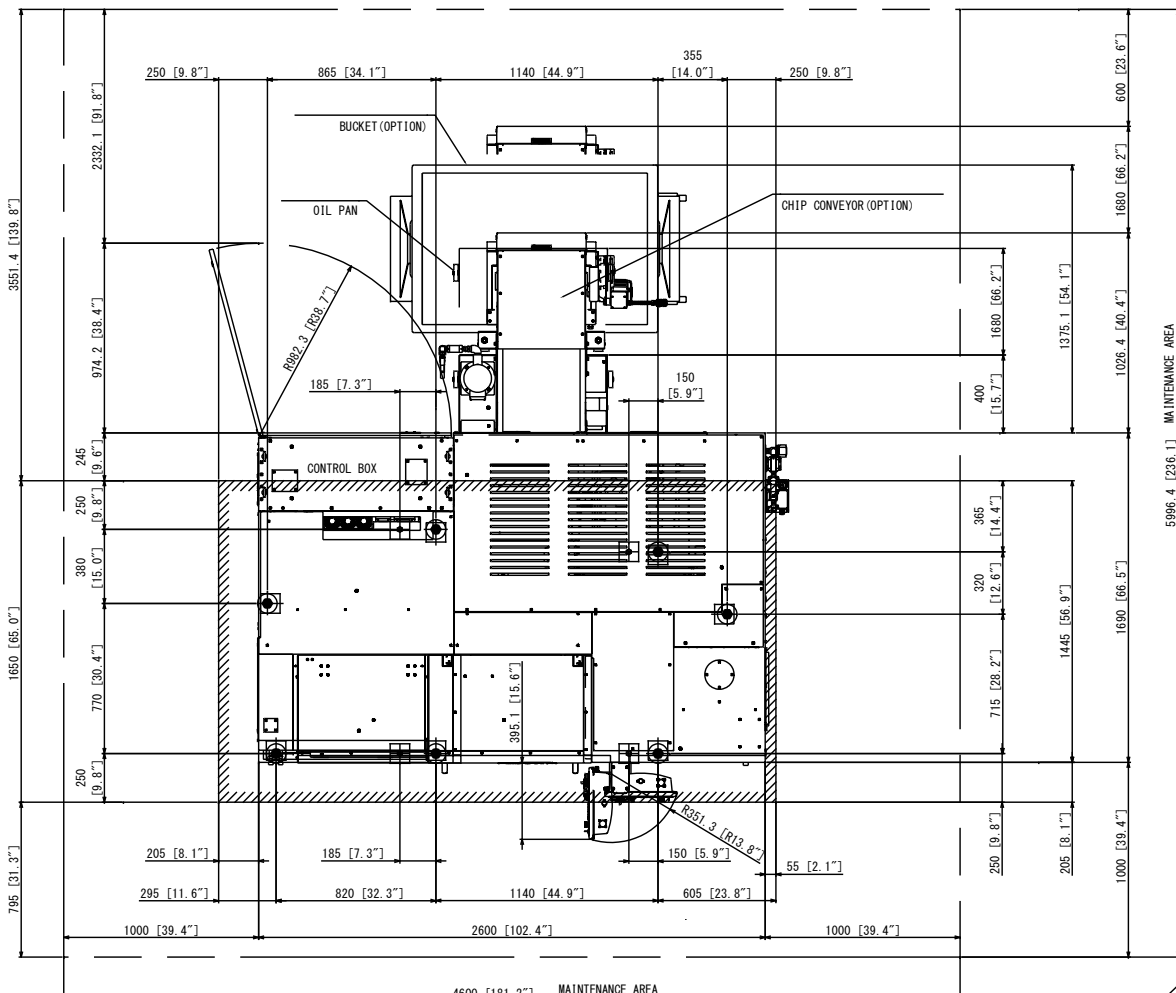


CONDITION OF INSTALLATION
 The foundation drawings in this volume of specifications for mere reference, before construction the foundation, before construction the foundation please consult us referring the model and the machine number and get the correct drawing.

1. Grounding
 1. Provide Class C grounding (ground resistance 10 ohm or less).

2. Notice
 1. Use gravel stones, to obtain a minimum soil bearing pressure of 78400Pa (8tf/m², 11.38 PSI).
 2. Use concrete with minimum compressive strength of 17.7MPa (2560 PSI)
 3. Use cautions not to have the concrete cracked.
 4. After the primary concrete is poured and the concrete is cures enough, make holes for the foundation bolts. Level the machine temporarily, assemble the foundation bolts, collar and fittings into the foundation bolt holes. Then pour epoxy agent into the holes.
 5. The surfaces of concrete for the foundation pits should be finished smoothly with the water-proof mortar.
 6. When complete water-proof on the floor is needed, ditches for collecting coolant should be made around the machine.
 7. Total volume of concrete 1.79m³ (63.21ft³)
 8. Please prepare and use the epoxy resin in "A" part of the drawing by your own.
 - Manufacturer: UNISORB
 - Access: Captain Industries Co. Ltd.
 - Name: V100 Standard epoxy grout
 - Necessary Volume: 12.6L + 25% [10kg Container can(5.9L) X3]

Receive Material Safety Data Sheet (MSDS) from manufacturer?
 When use a substitute, check toxic substance including or not and heat generation and combustibility, use in accordance with the manufacture's instructions manual.



CHUCK/CYLINDER TYPE	CYLINDER COVER	TOTAL LENGTH
QTEz-8	B-206-15B+SR1146C	0 (0")
QTEz-8 (OP)	B-208A615+SR1453C	2600 (102.4")

CHUCK/CYLINDER TYPE	CYLINDER COVER	TOTAL LENGTH	APP'D	CHK'D	DSGN	DRAWING
QTEz-10	B-208A615+SR1453C	0 (0")				
QTEz-12	B-210A815D+SR1677C	170 (6.7")				
QTEz-10 (OP)	BB208A615A+SR1566C	0 (0")				
QTEz-10 (OP)	B-210A615A+SR1677C	170 (6.7")				
QTEz-12 (OP)	BB210A815+SR1781C	170 (6.7")				
QTEz-12 (OP)	B-212A815A+S2091-15Y	170 (6.7")				

QTEz 8/10/12 500U
 WITH REAR DISCHARGE CV
 FOR KY PRODUCTION