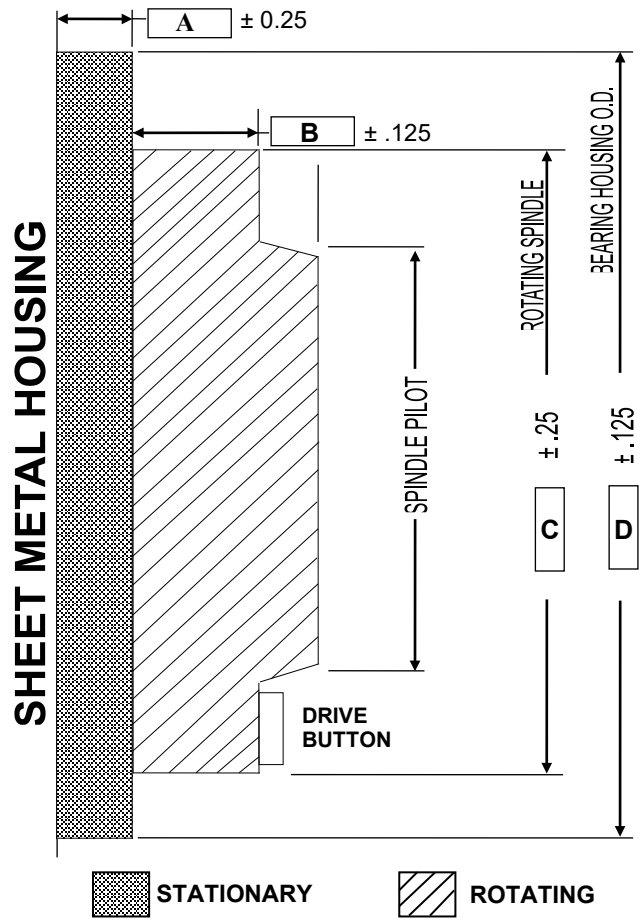
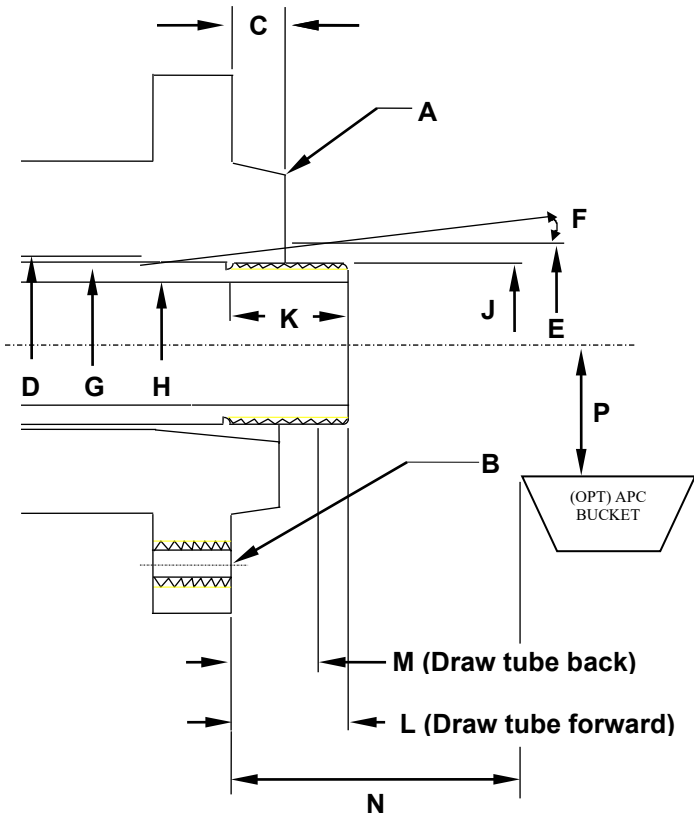


SPINDLE DATA SHEET FOR MAZAK MODEL QTEz 10 Main Spindle SR1677C (STD)



MACHINE/SPINDLE DATA		
A	spindle configuration (taper size)	A ₂ 6
B	mounting thread	M12
C	length of pilot	14.3
D	spindle through hole diameter	76
E	ID taper	76
F	Angle of taper	0
G	OD of draw tube	75
H	ID of draw tube	66
J	draw tube thread (right)	M75 x P2.0
K	length of thread	27
L	draw tube position (forward)	54.5
M	draw tube position (retracted)	31.5
N	APC bucket position (min)	153.7
	APC bucket position (max)	204
P	APC bucket position	65

MACHINE/SPINDLE DATA		
A	Bearing housing face to sheet metal	37.7
B	Rotating spindle to bearing housing	3
C	Spindle Diameter	165
D	Bearing housing	220
Voltage Available: <u>24 DC</u>		

	MODEL	PART NUMBER
CHUCK TYPE	B-210A615A	M10KM006241
CYLINDER TYPE	SR1677C	M11KM008350
DRAW TUBE		0B6275C0010
SPINDLE		0B160100111