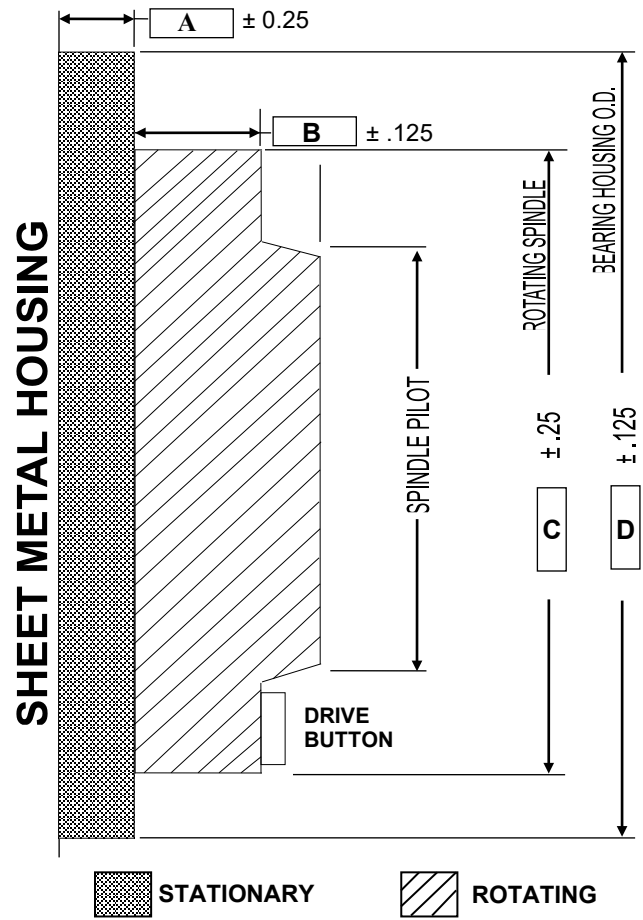
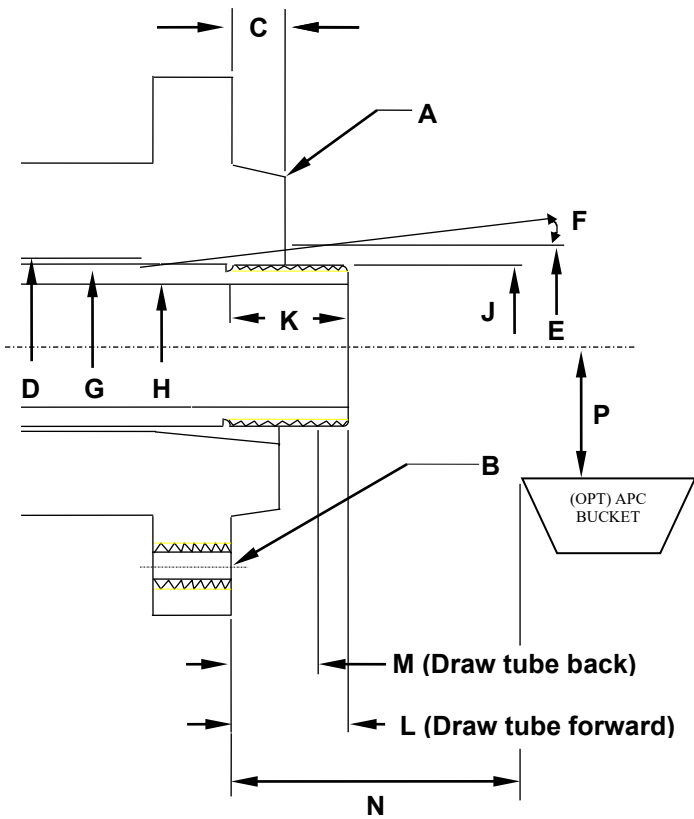


# SPINDLE DATA SHEET FOR MAZAK MODEL QTEz 12 Main Spindle S2091-15Y (STD)



MACHINE/SPINDLE DATA		
A	spindle configuration (taper size)	A <sub>2</sub> 8
B	mounting thread	M16
C	length of pilot	15.9
D	spindle through hole diameter	91
E	ID taper	91
F	Angle of taper	0
G	OD of draw tube	88
H	ID of draw tube	78
J	draw tube thread (right)	M88 x P2.0
K	length of thread	30
L	draw tube position (forward)	48.5
M	draw tube position (retracted)	18.5
N	APC bucket position (min)	132.1
	APC bucket position (max)	182.4
P	APC bucket position	65

MACHINE/SPINDLE DATA		
A	Bearing housing face to sheet metal	48
B	Rotating spindle to bearing housing	6.5
C	Spindle Diameter	209.5
D	Bearing housing	270
Voltage Available: <u>24 DC</u>		

	MODEL	PART NUMBER
CHUCK TYPE	B-212A815A	M10MKM91800
CYLINDER TYPE	S2091-15Y	M11MKM00740
DRAW TUBE		0B627500170
SPINDLE		0B080100011