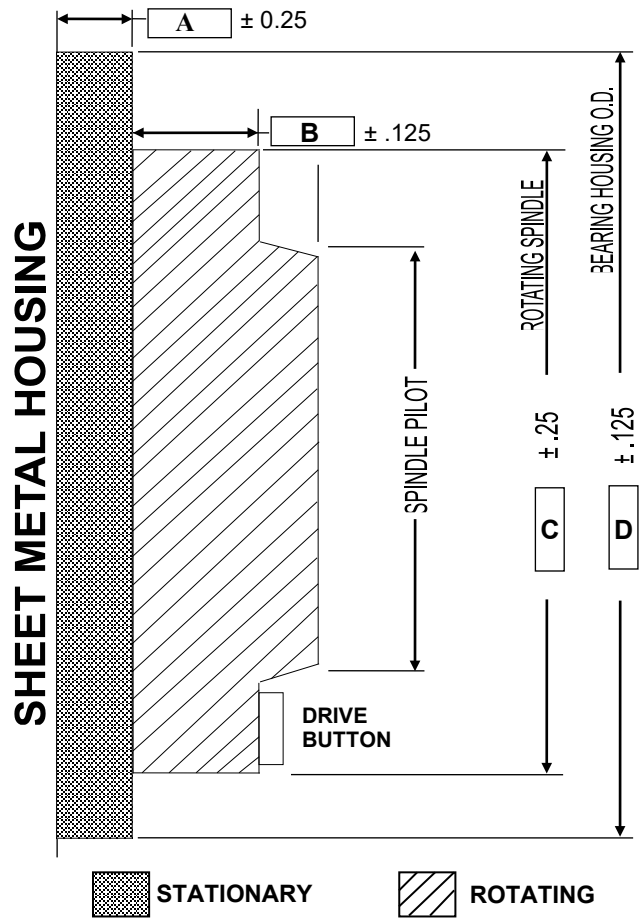
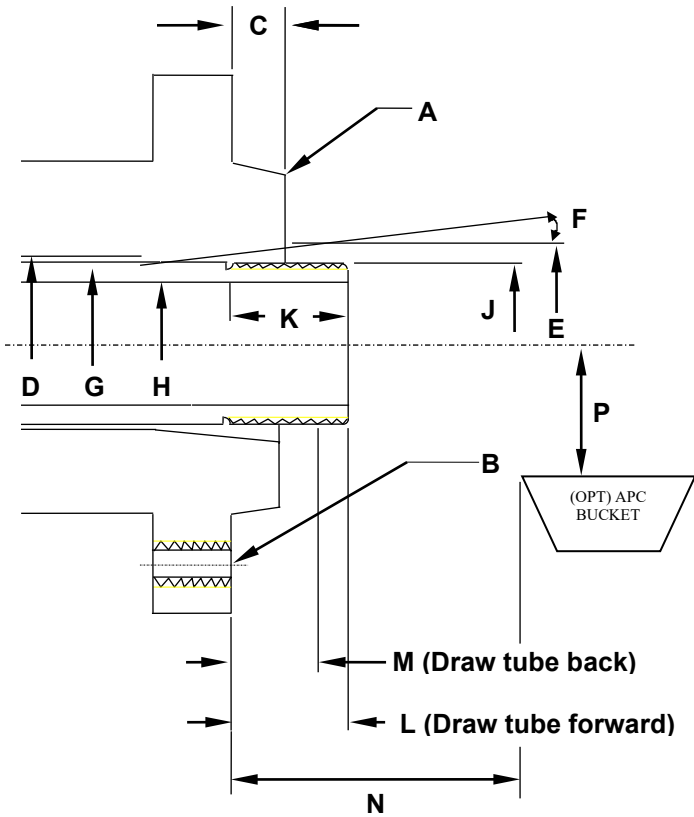


SPINDLE DATA SHEET FOR MAZAK MODEL QTEz 8 Main Spindle SR1453C (STD)



MACHINE/SPINDLE DATA		
A	spindle configuration (taper size)	A ₂ 6
B	mounting thread	M12
C	length of pilot	14.3
D	spindle through hole diameter	61
E	ID taper	61
F	Angle of taper	0
G	OD of draw tube	60
H	ID of draw tube	52
J	draw tube thread (right)	M60 x P2.0
K	length of thread	22
L	draw tube position (forward)	49.5
M	draw tube position (retracted)	30.5
N	APC bucket position (min)	149.7
	APC bucket position (max)	200
P	APC bucket position	65

MACHINE/SPINDLE DATA		
A	Bearing housing face to sheet metal	37.7
B	Rotating spindle to bearing housing	3.1
C	Spindle Diameter	165
D	Bearing housing	220
Voltage Available: <u>24 DC</u>		

	MODEL	PART NUMBER
CHUCK TYPE	B-208A615	M10KM006231
CYLINDER TYPE	SR1453C	M11KM008290
DRAW TUBE		0B627500100
SPINDLE		0B060100530